

# FOR LEASE

## OFFICE SPACE ACROSS FROM UNION STATION AND LIBERTY MEMORIAL



- Up to 13,125 square feet available.
- \$22.00 per rentable square foot.
- 4/1000 covered attached parking.
- Amenities include rooftop deck, fitness facility and club room.
- Excellent views of Liberty Memorial, Crown Center, Union Station & Downtown.
- Directly across the street from Union Station and adjacent to Liberty Memorial.
- Front-row views to major events at Union Station and Liberty Memorial: Chiefs and Royals victory parades, Memorial Day celebrations, etc.
- Access 3D views of the building and available space plans below:
  - 2nd Floor Plan: [Virtual Tour](#)
  - Entire Building: [Virtual Tour](#)

PERSHING BUILDING  
215 PERSHING ROAD  
KANSAS CITY, MO 64108



**Chuck Connealy, SIOR, CCIM**

Direct: (913) 789-9020

Cell: (913) 515-6616

[chuck.connealy@waterfordproperty.net](mailto:chuck.connealy@waterfordproperty.net)



# 2ND FLOOR POTENTIAL



PERSHING BUILDING  
215 PERSHING ROAD  
KANSAS CITY, MO 64108



**Chuck Connealy, SIOR, CCIM**

Direct: (913) 789-9020

Cell: (913) 515-6616

[chuck.connealy@waterfordproperty.net](mailto:chuck.connealy@waterfordproperty.net)

Information furnished regarding property is from sources deemed reliable but no warranty or representation is made as to the accuracy thereof and same is submitted subject to errors, omissions, prior sale or lease or withdrawal, without notice.

# AVAILABLE SPACE

## 2nd Floor

13,125 RSF

[2nd Floor Virtual Tour](#)



PERSHING BUILDING  
215 PERSHING ROAD  
KANSAS CITY, MO 64108



**Chuck Connealy, SIOR, CCIM**

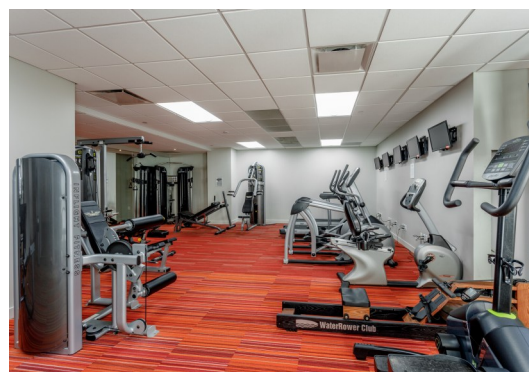
Direct: (913) 789-9020

Cell: (913) 515-6616

[chuck.connealy@waterfordproperty.net](mailto:chuck.connealy@waterfordproperty.net)

Information furnished regarding property is from sources deemed reliable but no warranty or representation is made as to the accuracy thereof and same is submitted subject to errors, omissions, prior sale or lease or withdrawal, without notice.





PERSHING BUILDING  
215 PERSHING ROAD  
KANSAS CITY, MO 64108



**Chuck Connealy, SIOR, CCIM**

Direct: (913) 789-9020

Cell: (913) 515-6616

[chuck.connealy@waterfordproperty.net](mailto:chuck.connealy@waterfordproperty.net)

Information furnished regarding property is from sources deemed reliable but no warranty or representation is made as to the accuracy thereof and same is submitted subject to errors, omissions, prior sale or lease or withdrawal, without notice.



# AERIAL MAP & AMENITIES



- 1 National World War I Museum and Memorial
- 2 Kansas City Ballet
- 3 U.S. Postal Service
- 4 Museum of Illusions
- 5 Pierpont's at Union Station
- 6 Science City
- 7 Union Station
- 8 Lidia's
- 9 Jack Stack Barbecue
- 10 Society
- 11 Café Gratitude Kansas City
- 12 Rhythm & Booze Downtown
- 13 Café Ollama Coffee House
- 14 La Bodega

- 15 Tacos el Gallo
- 16 Studio Dan Meiners
- 17 Penn Valley Skate Park and Tennis Courts
- 18 Union Hill
- 19 Filling Station Coffee
- 20 You Say Tomato
- 21 Sheila Kemper Dietrich Park
- 22 Sucotash
- 23 The Antler Room
- 24 Kaleidoscope
- 25 LEGOLAND Discovery Center
- 26 Fritz's
- 27 Crown Center Ice Terrace